



Mitten Christmas Cards

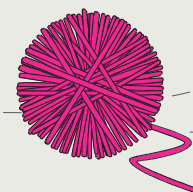
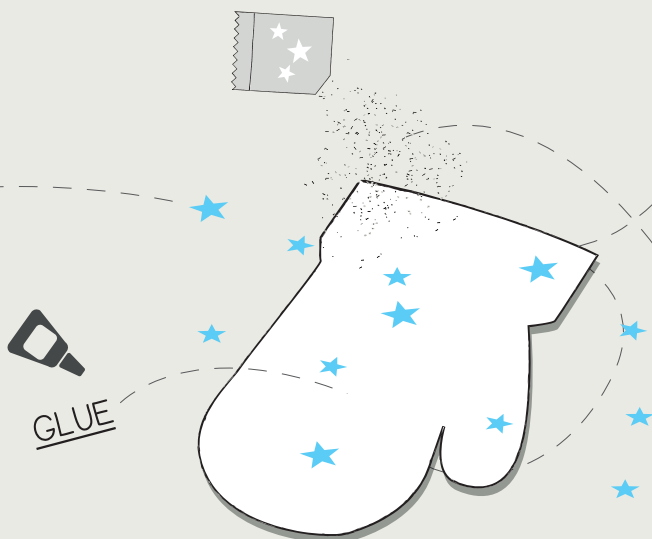
HERE'S WHAT YOU DO

1. Fold the white card in half, short ends together. Then take your coloured A6 card and trim a little before gluing to the front of the card. You want to be able to see some of the white card so it makes a 'frame'.
2. Use the mitten template to cut out mitten shapes onto another piece of the A6 coloured card.
3. Next comes the fun bit! Take your glitterglue stick and put lines across the mitten. Wait a few minutes for the glue to set and then shake the mitten – you should end up with lovely sparkly lines.

- YOU'LL NEED:
- SHEETS OF A5 WHITE CARD
 - SELECTION OF A6 COLOURED CARD
 - GLITTER GLUESTICKS
 - HOLE PUNCHER

AND

- SELECTION OF MULTI-COLOURED WOOL
- OUR MITTENS TEMPLATE
- SCISSORS
- ENVELOPES



WIN!

£500

In Amazon Vouchers

Mitten Christmas Cards

PUNCH



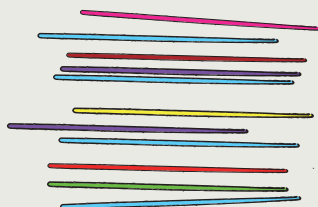
4. Punch seven equally spaced holes along the cuff section of the mitten shape. Cut 14 x 5cm pieces of wool. Take two pieces of wool and fold in half.

5 Thread the folded wool into one of the mitten holes from the back. Thread the ends through the loop and pull until firmly in place.

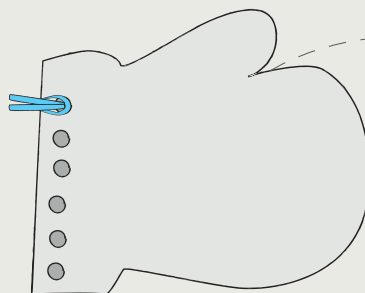
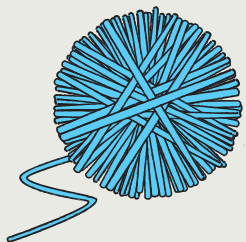
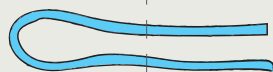
6. Do the same for each hole and then trim the ends so they are all equal length.

7. Glue the decorated mittens to the centre of the card front.

WOOL



Loop



GLUE

